

Preservation Update!

Newsletter

Historic Pella Trust – Pella's Historic Preservation Organization!
Volume 17 – Spring 2013

Please plan to join us!
April 25th at the Opera House
For Historic Pella Trust
Annual Meeting

Dinner by Eunice – Served at 6:00 – Reservations Requested!

Annual Meeting will begin at 7:30.

We will present:

Architectural Significant Awards
and

2013 Historic Preservation Awards
to

*Deserving Pella Residents who have made preservation of their historic property
foremost in their restorations designs!*

Eunice's 6 o'clock meal – \$10 payable at the door – our Annual meeting @ 7:30

For Dinner Reservations: Call the Pella Opera House – 628-8625 or:

Historic Pella Trust – 628-8003 or via email: historicpellatrust@yahoo.com



1928's Postcard
compliments of
Ralph Jaarsma
collection.

Pella...the American dream continues...

...In 1847 Willem Slobe left

Rotterdam on the Nagasaki, excited to sail to America where new adventures and opportunities awaited for Willem and his wife, Aaltje [Den Hartog] and their baby Frederick. Surrounded by family and friends they set sail on the ship Nagasaki one of the three ships carrying the colonists that followed Dominie Scholte to America.

Tragedy struck in 1849 when Aaltje and their baby died. For two years Willem grieved over his loss. Being young and surrounded by friends who encouraged him to find a new wife, Willem could not help but notice the sweet smile of pretty Heiltje [De Booy] and in 1851 they became man and wife.

In 1853 Willem and Heiltje opened a general merchandize store, having bought Mr. Napiers general store on the east side of Garden Square. To this marriage five children were born; Adriana 'Jane', 1855; Federick, 1857; Aartje, 1861; Mattys 'Tice', 1866; and Hubert, 1869. With five lively children Heiltje still found time to work alongside her husband, and was an important partner to her entrepreneurial husband. Eventually Tice, Hubert and Jane assisted their mother in running the store' Jane and Tice never married and took over the operation when their father died in 1881.

In 1891 a fire destroyed their building and the family purchased land on the corner of Broadway and Washington Street. [839 Broadway]. The family built the current sturdy brick building that housed Slobe Bros and Co. and added separate living quarters that faced Washington Street. For many years the business carried a variety of merchandise. On the left side they displayed dry good; many items from household good to ribbons, threads, carpets, umbrellas and furniture ordered from catalogues. Jane was in charge of this portion of the business. On the right side of the store, groceries were displayed and sold, Tice took charge of this portion of their business leaving Hubert to purchase and control the inventory.

Local patrons frequently gathered around a large stove near the rear of the store where heated discussions of politics and current Pella issues, filled the air. A tobacco box was on the counter near the stove, and those gathered near the stove could "fill their pipes" as they continued their discussion

Slobe Bros. and Co. continued business until 1944 when they closed their business after 89 years in business. Marie Nieburg rented the building for her antique business. In 1864 Herbert's widow passed away and the building was sold to Robert Klein who sold it in 1984 to Al Vander Peut.

...In 1997 Dr. Jeffrey Allen

purchased 839 Broadway when he was deciding where to expand his growing dental business. A strong supporter of historic preservation, he was delighted to own a historic building on the square, and working with Nossaman Construction Company in 2003 and again in 2012, he modernized the inside with state-of-the-art dental technology and equipment while preserving and enhancing the history of the building. The office is exquisitely decorated in urban décor and has areas that expose restored brick walls and wood flooring. Clients are surrounded in a unique and comfortable environment that enhances the quality of life in small town America and reminds us of values that are never outdated.

For centuries dentists worked out of their offices located close to where the people lived, usually on the town square, often in a house setting, making it easy to stop in to take care of dental problems that were bothersome. Unfortunately in our 21st century these types of dental businesses are hard to find, and this makes Dr. Allen's dental practice stand out from the rest. Small town America still has a lot to offer when businesses like this can create unique environments by restoring historic sites and combining it with high tech, quality-oriented services.



Slobe Grocery in the 800 block of Broadway.

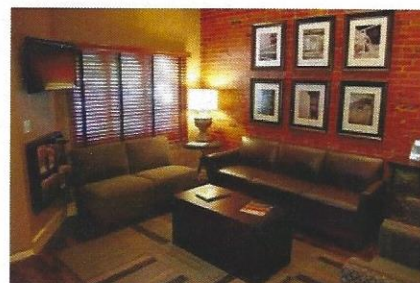
Slobe Grocery - (far right) both outside and inside views, taken ca:1920 Pella.



Interior of Slobe Bros. and Co. Left, behind counter: Jane and Hubert; Right, behind counter (rest) is Matthew "Tice".



Dr. Allen's building - 2013
839 Broadway



View of Dr. Allen's reception room. Note the restored original brick wall.

Featured Historic House The Bean Family Home

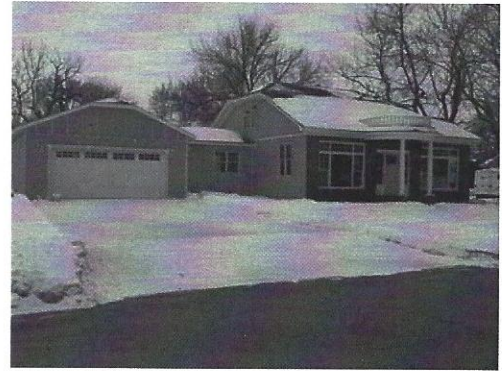
Sitting on the corner of Union and East Third Streets is a home familiar to many who live in Pella. Originally built by the Bean Family in 1916's, on the south side of Union Street, at 610 Union. It was sold to the First Reformed Church who turned it into an Outreach House to support their ministries.

The home was purchased by Rich Slings and he moved it to its current site at Independence and East Third streets. Immediately Rich started the process of remodeling this lovely house. He added brick to the north and west sides of the house using the salvaged bricks from the house, discarded when the house was prepared for moving. He also added a double garage that is attached by an enclosed walkway. Unfortunately Rich became ill and passed away before completing his restoration on this home.. This was a big loss to Pella, for Rich loved the history of Pella and the renovation project he had taken on with this unique home.

Matt Vander Linden and Russ Van Wyk became the new owners and were eager to continue on with the restoration that Rich Slings had started. Keeping with the original era the home was built, they also added appropriate weather tight Pella windows, add a very modern kitchen, a new furnace and new wiring. They have gone to great lengths to replace new woodwork by matching the wood to the period the house was built. Other additions were the restoration of the original wood floors; restoring the fireplace mantel, and adding a new bath. In a main bedroom upstairs was a beautiful transom above the door, typical of home build in early 1900's, which they restored to its original beauty.

On the outside, the front porch was restored by refurbishing the porch columns and railings and the use of wanes coating on the ceiling.

Matt and Russ's goal is to have the house finished by early spring 2013, then they hope that whoever buys the house will love it for the history of its time, and will continue to enjoy a home from the 1920 era, preserved to insure it will continue to reflect Pella's charming history for many years to come.



Restored 'Bean' home located at the corner of Independence and E. 3rd.

*610 Union – BEAN HOME
Early information on this home has been difficult to obtain. We know the Bean Family built it in 1916. HPT is looking for photos taken of this home from it's early days.*

*If you have any pictures or information on the Bean Family from this era (1916's), please contact the Historic Pella Trust office at 628-8003 or send you information via email:
historicpellatrust@yahoo.com.*

We will return any photos or documents to you as quickly as possible.

*Ellie Gosselink
Director*

BARN PRESERVATION!

Preservation of barns is an important issue today, as many barns are disappearing. When taking a drive throughout the countryside surrounding Pella, one can see where barns built in the 19th and early 20th centuries have been torn down, and replaced by large modern rectangular structures.

Barns built from 1847 through the mid-1900's were at the heart of Pella's prosperity. It was through the development and growth of farms that provided trade for the Dutch colonists as they settled the land. Barns, not only housed the livestock and farm implements but they were used for the storing of hay and grains.

One historic red barn still stands today on the Vermeer Road. On land owned by Pella Nursery, you can see a stately red barn nestled among a large grove of trees. This barn was built in 1895 by Gerrit Veermer. When this barn was less than a year old Gerrit's wife, Henrietta DeBruin Vermeer, passed away and her funeral was held in the barn. This was done because the Vermeer family was large, and they had many friends in the community so a large crowd was anticipated to attend.

Funeral homes, during this era, were prepared to support funerals held in other paces. Many of the churches in and around Pella were too small to accommodate large crowds. The funeral homes would stock a large supply of wooden chairs that could be transported to any designate funeral site. On the day of Mrs. Vermeer's funeral a large wagon loaded with wooden chairs pulled up outside the barn and they were quickly set up inside the Vermeer's new barn.

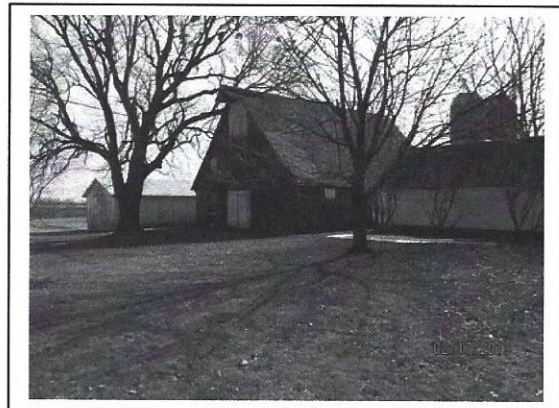
If only "walls could talk," oh the stories we would learn of the many happenings in barns over the years. Barns were the heart of the farm. In the spring the birthing of new livestock sheltered the new born colts, calves, pigs, goats, and sheep. Daily milking of the cows provided nourishing milk and butter. Stored hay would feed the stock through the long Iowa winters. Errant chickens would make a nest hidden under the barn's eaves. Usually the chore of the youngest farm family member was to scout out these nests.

The barn provided a warm, safe place to house the horses who were prized for their strength and used for the important task of planting and harvesting crops. Every farmer had a Surrey (a two or four-wheeled carriage) that transportation his family to neighbors or into Pella for supplies. Barns also made a great place to spend a rainy day for the youngsters who lived on the farm. A farm could not function without a strong, well built barn.

Preservation of barns is a growing trend, one that is not easy to accomplish due to cost of restoration, but thankfully there are those who are willing to do what it takes to restore and preserve these icons of America's history.

Article supplied by Duane Rempe

Written by E. Gosselink



John Vermeer's Barn - 2012

PRESERVING BARNs NATION WIDE!

The National Trust for Historic Preservation BARNs AGAIN!

program helps farmers and ranchers find ways to maintain and use historic barns and agricultural buildings as part of modern agricultural buildings. BARNs AGAIN offers organized educational workshops and recognizes good stewardship through an awards program.

For more information of saving historic barns visit the web site of the National Trust of Historic Preservation @ www.preservationnation.com

**Historic Pella Trust 2013
Preservation Projects Update!**

Tuttle Cabin:

Funding is needed for caulking and roof work to be scheduled as soon as possible.

Pella's Collegiate Historic District –
Between West First and Independence Streets
Phase 1 – reconnaissance survey completed.

Phase 2 – Started in 2013 – (see back page of newsletter)

1110 Washington Street – Work will begin this spring to bring this building up to code. Funding is needed to complete this project.

Rock House – Status – Building and grounds in good condition – currently rented.

Soul Sleeper Church – Status – Building in good condition – currently rented.



HPT believes this home has been torn down and was owned by A. Vanderzee in 1903. HPT would like to find the location and address of where this home stood. Picture. c1903. If you know please contact our office - 641-628-8003.

Watch for these upcoming events!

September – Beef-Bash at our office!

November – Historic Pella Trust
2014 History Calendar
will be on sale!

President's Letter

Historic Pella Trust is continuing its preservation effort to help maintain Pella's distinctive charm. Some of our distinctive older buildings provide a special link to our Dutch heritage and also gives our village a comfortable, gracious feel.

Today we are working on two special projects. We have begun to actively raise funds to preserve the Vander Veer Store, built in ca. 1849 located at 1110 Washington Street. This general store was the first of its kind built in Pella. We have made some nice progress in raising the funds for this project and hope to begin our renovation this spring. [Please contact Ellie Gosselink, or one of our board members if you want to know more about this project and what you can do to help.] It will be an expensive project, so we would certainly appreciate your financial support.

At the same time we are working with property owners Gayle and Monty Kirby on a plan to maintain and preserve the Tuttle cabin, located at 608 Lincoln Street. The cabin is located on its original lot alongside the 1840's road connecting the Skunk and the Des Moines rivers.

The cabin was built in 1843 and is the location where Dominie Scholte, Issac Overkamp and three other leaders of the Dutch colony who recently immigrated to America, met and over lunch negotiated the purchase of the Tuttle land that was the beginnings of Pella.

Our board feels these buildings are an important part of Pella's heritage and hope that you and your friends will find ways to actively support these projects and our general goals of maintaining our special Pella charm.

Het aller beste,

Bob Zylstra



Become our fan on Facebook

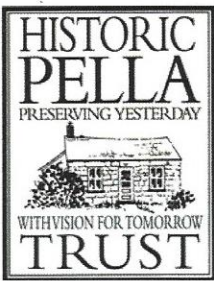
**Historic Pella Trust is now on
FACEBOOK**

**“like our page” and visit us
today!**

Let us know you're our friend!

Search our fan page!

“Historic Pella Trust”



Historic Pella Trust
Pella's Non-profit
PRESERVATION ORGANIZATION!

P. O. Box 1 • Pella, IA 50219

PRSRT STD
U.S. POSTAGE
PAID
PELLA, IA
PERMIT NO. 89

OR CURRENT RESIDENT

Pella's First Collegiate Historic Cultural District
Intensive Survey and National Register Nomination Collegiate Historic District, Pella, Iowa
Boundary – East First Street (both sides) from Union to Independent Streets
Initiated by Historic Pella Trust in 2011

The First Phase of the initial reconnaissance survey is completed with positive results.
The Second phase – Consist of an in-depth research into the history and architectural heritage of the area, prepares a written historical analysis of it, and completes an *Iowa Site Inventory Form* for each property within the area. These forms provide specific information about the construction history, design, function, and alteration of each building.

This phase was started in February 2013 target date for completion late 2014.

"America's historic places embody our unique spirit, character and identity. Representing important historical trends and events, reflecting the lives of significant persons, illustrating distinctive architectural, engineering, and artistic design achievement and imparting information about America's past, historic places tell compelling stories of the Nation and of the States and communities throughout the country. The National Register helps preserve these significant historic places by recognizing this irreplaceable heritage.

Statement from the –The National Register of Historic Places Brochure-2010